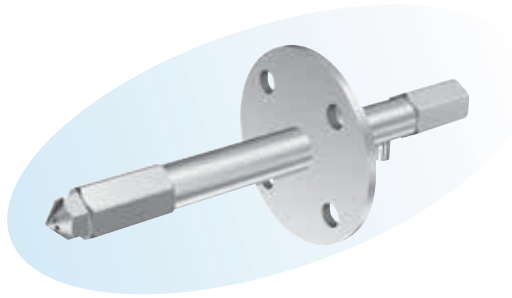


KAMX Nozzle Standard type



► Features

- Light weight and compact design.
- Spray angle capacity from 40° to 80°.
- Prevention of dust adhesion by reducing large droplets in the spray periphery even at a low air-water volume ratio.

► Applications

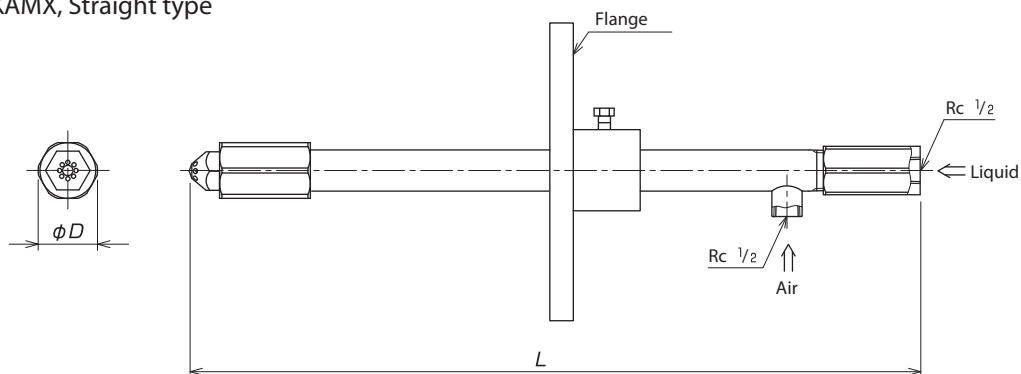
- Exhaust gas cooling in waste incineration plants and desuperheating tower.

► Material

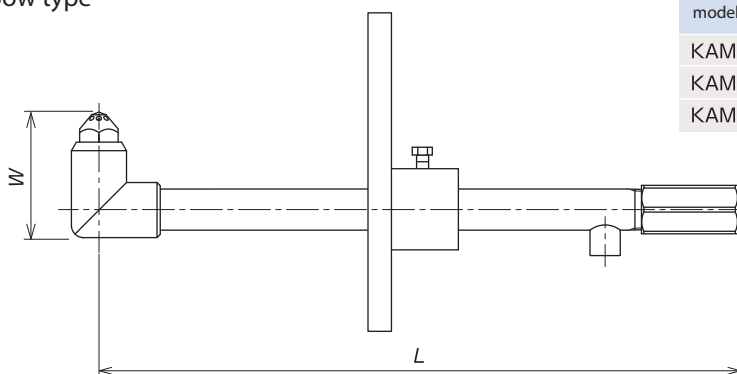
- Principal parts : 316L Stainless steel

Shapes and dimensions

● KAMX, Straight type



● KAMX, Elbow type



Nozzle model No.	Dimension [mm]	
	D	W
KAMX 90	34	75
KAMX 220	44	105
KAMX 1000	44	105

* NPT thread is also available.

* Dimension L and flange size are to be specified by the customer.

● Model and Model Number representing

KAMX 500
Model number

