



FEATURES

- Simple structure and anti-clogging.
- Divergent internal structure allows supersonic blow.
- Tapered nose shape minimizes turbulent flow and reduction in rate.

APPLICATIONS

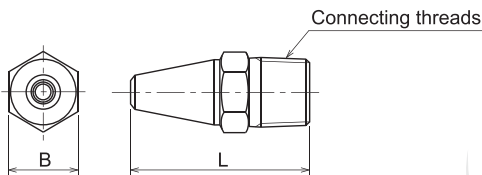
- Air purging for roll edge.
- Blowing away paper dust.

MATERIAL

- Stainless steel (standard material : JIS SUS303)
- Brass
- Aluminum

SHAPES AND DIMENSION

● KSV type



Model	Dimension (mm)		Connecting threads	Weight (g)
	B	L		
1/4 KSV...C	14	34	R 1/4	33
3/8 KSV...C	17	44	R 3/8	55

We can also provide for pipe attachment type. (φ6 and φ8)
For more information, please contact our sales representatives.

STANDARD TYPE MODEL NUMBER LIST

● : Model availability

Connecting threads	Model			Model number	Orifice diameter (mm)	Air flow rate (ℓ/min(Nor.)) at following pressure (MPa)						
	KSV	KBV	KAV			0.1	0.2	0.3	0.4	0.5	0.6	0.7
1/4		●	●	0300	1.75	48	72	72	120	143	167	191
		●	●	0400	2.04	64	96	96	159	191	223	254
		●	●	0500	2.26	80	120	120	199	239	278	318
		●	●	0700	2.68	113	168	168	279	334	390	445
		●	●	1000	3.22	161	240	240	398	478	557	636
3/8	●	●	●	1400	3.80	225	336	447	558	669	780	890
	●	●	●	2000	4.56	322	480	639	797	955	1110	1270

※ Spray angle : about 16°

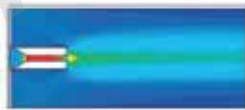
Performance data

Velocity distribution analysis result

Analysis condition : Minimum passage diameter=φ6 mm, Pressure=0.1 MPa,
Nozzle length=approx. 50 mm

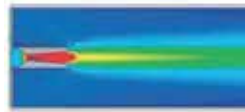
Pipes

Decaying speed at nozzle outlet.



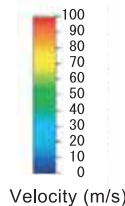
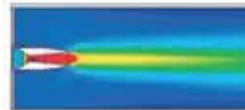
KBV (conventional type)

The less decaying speed than pipe type.



KBV (latest model)

Allow for the most rapid blowing.



Flow velocity of nozzle outlet

