

Flat Air Nozzle



Blows air with a wide angle

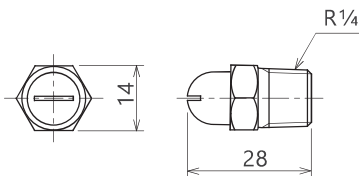


- 303 Stainless steel
- Brass



Shapes and dimensions

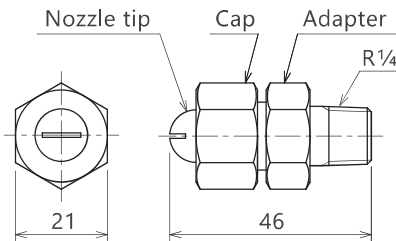
《KSTTH, Integral type》



Model	Model No.	Min. orifice diameter [mm]	Max. service pressure [MPa]	Max. air flow rate [L/min(nor)]	Heatproof temp. [°C]	Weight [g]
KSTTH KBTHH	03	0.7	0.7	191	250	30
	04	0.8	0.7	254	250	30
	05	0.9	0.7	318	250	30
	07	1.0	0.7	445	250	30
	10	1.2	0.7	636	250	30

● These values of heatproof temperature and weight are based on stainless steel material.

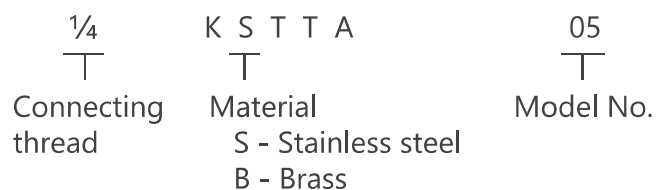
《KSTTA, Separate type》



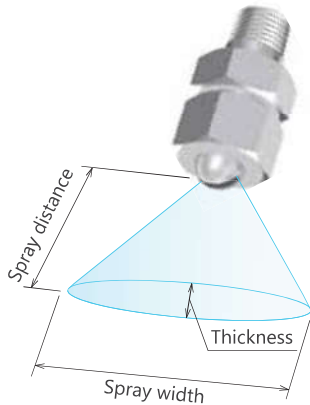
Model	Model No.	Min. orifice diameter [mm]	Max. service pressure [MPa]	Max. air flow rate [L/min(nor)]	Heatproof temp. [°C]	Weight [g]
KSTTA KBTTA	03	0.7	0.7	191	250	60
	04	0.8	0.7	254	250	60
	05	0.9	0.7	318	250	60
	07	1.0	0.7	445	250	60
	10	1.2	0.7	636	250	60

● These values of heatproof temperature and weight are based on stainless steel material.

- Model and model number representing



Performance data



Spray width and thickness characteristics

Model	Air pressure [MPa]	Spray widths and thickness at the following spray distances [mm]							
		50		100		300		500	
		Width	Thickness	Width	Thickness	Width	Thickness	Width	Thickness
KSTTH	0.1	80	13	135	27	288	78	422	150
KBTHH		107	12	171	25	363	77	512	146
KSTTA	0.3	159	11	250	23	500	74	698	140
KBTTA		107	12	171	25	363	77	512	146

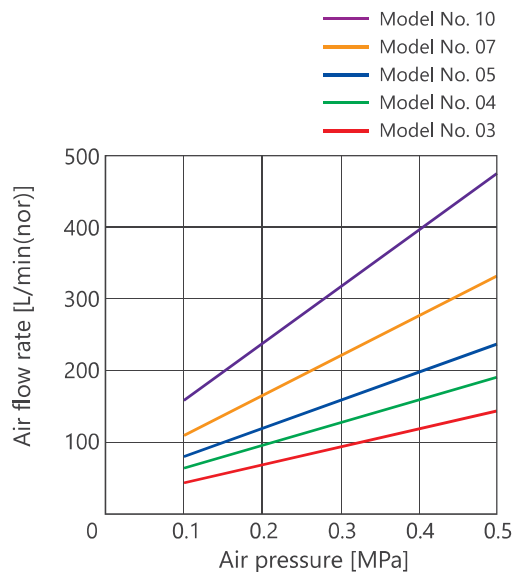
Air velocity characteristics

Measurement position : Center of spray

Spray direction : Horizontal

Model	Model No.	Air pressure [MPa]	Air velocity [m/s] at the following spray distances [mm]			
			50	100	300	500
KSTTH KBTHH KSTTA KBTTA	03	0.1	15	7	2	1
		0.3	30	15	5	3
		0.5	40	20	7	4
	04	0.1	25	12	3	2
		0.3	50	25	8	5
		0.5	65	32	10	6
	05	0.1	30	15	5	3
		0.3	60	30	10	6
		0.5	80	40	13	8
	07	0.1	40	20	7	4
		0.3	80	40	14	8
		0.5	100	50	18	10
10	0.1	50	25	8	5	
	0.3	100	50	16	10	
	0.5	130	65	21	13	

Air flow rate characteristics



Noise level characteristics

Measurement position : 1 m above the floor, 1 m distance

Background noise : 45 dB

Spray direction : Horizontal

Model	Model No.	Equivalent sound levels [dB] at the following air pressures [MPa]		
		0.1	0.3	0.5
KSTTH KBTHH KSTTA KBTTA	03	54	64	68
	04	56	67	71
	05	58	69	74
	07	61	72	78
	10	65	76	82