



EVERLOY

As the leading spray nozzle manufacturer

EVERLOY
SPRAY
NOZZLES



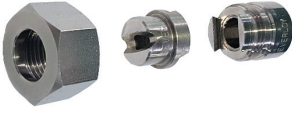
EVERLOY

TECHNOLOGY • INNOVATION • SOLUTION



KSZ type

Tips without alignment of spray angle



Dovetail Type



DNEX type

Save flowrate higher impact force



Descaling Nozzle



KBS type

Reduces steam same effect



Steam Nozzle



KSS...P-A, P-B type



Cat's-eye Nozzle



KSHR type

Thickening



KSTF type

Width than other



Extra Thickening



SCF type

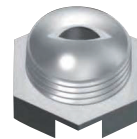
Resistance to clogging



Self-Cleaning Nozzle



KSH...C type



C-type Nozzle



KSF type

Separate type



SPECIAL MATERIAL

- 1) Titanium 2) Nickel alloy
- 3) Hastelloy 4) Inconel

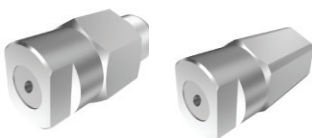
Full Cone Nozzle

Full-circle pattern



KSE...H type

Oval Spray Nozzle



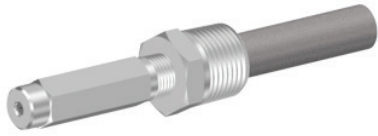
KSFW...H type

Elbow type



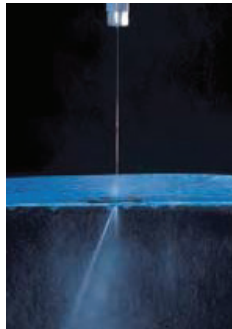
KCJ...D type

Needle Jet Nozzle



TIP MATERIAL

Tungsten carbide / Ruby



KSJ...C type

C-type Nozzle

Less clogging for slurry



KSJ...S type

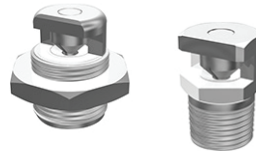
Straight Jet Nozzle

Orifice of highly wear-resistant material



SCJ type

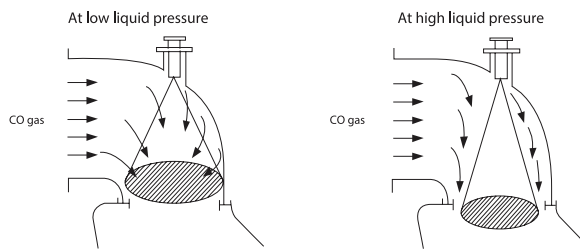
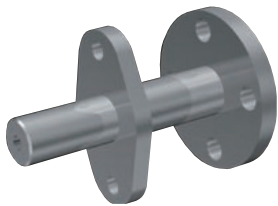
Self Cleaning Nozzle



KSF type

Liquid Ammonia Spray Nozzle

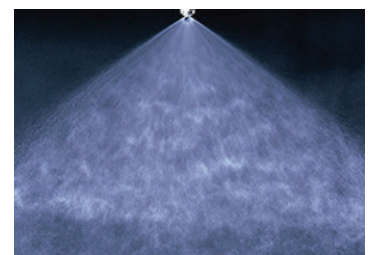
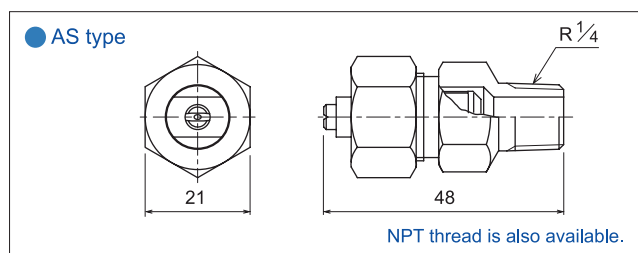
Catalytic NOx reduction



AS type

Flat Atomizing

Soft spraying of fine droplets



Standard type model number list

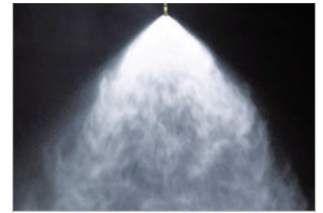
Inlet Connection	Model	Model number	Minimum orifice diameter (mm)	Flow rate (L/min) at following pressure (MPa)							Spray angle at following pressure (MPa)					Filter (mesh)
				0.1	0.2	0.3	0.5	0.7	1.0	1.5	0.1	0.3	0.5	1.0	1.5	
1/4	AS	00240	0.3	0.115	0.163	0.20	0.26	0.31	0.37	0.45	14°	40°	52°	57°	57°	200
		00250	0.3	0.115	0.163	0.20	0.26	0.31	0.37	0.45	30°	50°	61°	67°	67°	200
		00280	0.25	0.115	0.163	0.20	0.26	0.31	0.37	0.45	56°	80°	87°	92°	92°	200
		00380	0.3	0.173	0.24	0.30	0.39	0.46	0.55	0.67	58°	80°	86°	90°	90°	200
		00450	0.4	0.23	0.33	0.40	0.52	0.61	0.73	0.89	38°	50°	57°	61°	61°	100
		00480	0.4	0.23	0.33	0.40	0.52	0.61	0.73	0.89	60°	80°	86°	90°	90°	100
		00680	0.5	0.35	0.49	0.60	0.77	0.92	1.10	1.34	62°	80°	86°	90°	90°	100

KSAME type

Air Mist Nozzles



Cooling, Cooling of gases
Special material available
less Clogging design ใช้ปริมาณลมน้อย



KAMX type

High-Capacity type



Light weight
Angle spray 40° - 80°
Application :
- Exhaust gas cooling
- Desuperheating tower
****Available special material**



KSAMM type

Air Mist Nozzles



เม็ดน้ำเล็กละเอียด ระเหยง่าย
Application : - Spray urea
- Water or Ammonia water
- Nox reduction
- Cooling
- Waste water atomizing in incinerator



KSMMS type

Mini Mist Nozzle



Internal mixing type
- Deodorization Tip
ออกแบบป้องกันการกระแทกและหัว tip สลัก
- Good for limited space



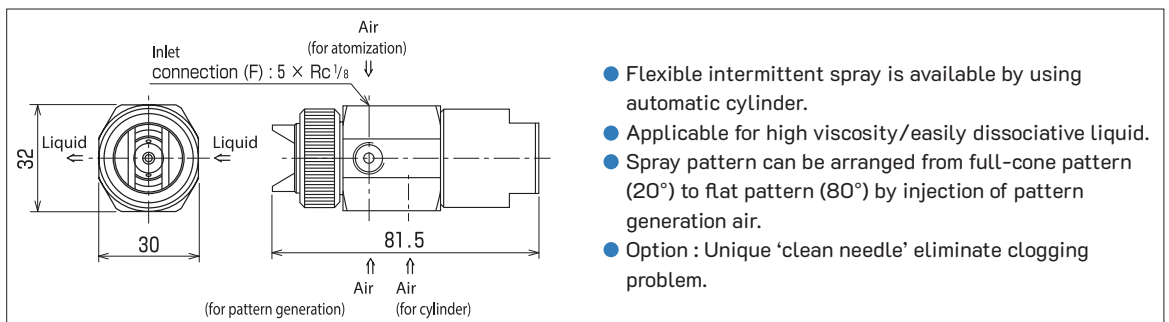
PV-D type

Pneumatic Atomizing



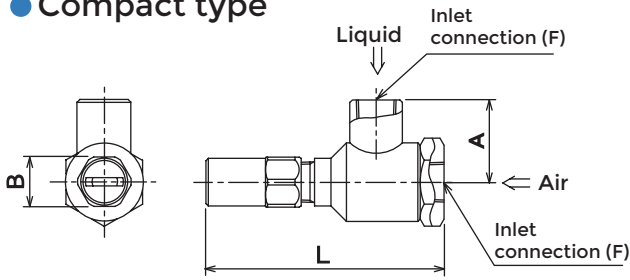
- With automatic syylinder, 3 Air + 2 Liquid sources type
- Coating / No water drop

High Viscosity



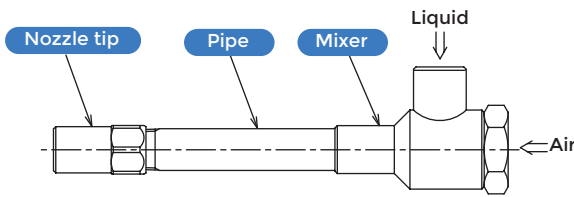
- Flexible intermittent spray is available by using automatic cylinder.
- Applicable for high viscosity/easily dissociative liquid.
- Spray pattern can be arranged from full-cone pattern (20°) to flat pattern (80°) by injection of pattern generation air.
- Option : Unique 'clean needle' eliminate clogging problem.

● Compact type

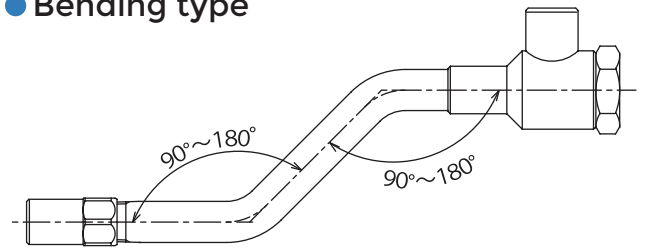


Model	Dimension (mm)			Connecting thread		Weight (g)
	A	B	L	Liquid	Air	
1/4 KSAME	34.5	17	100	Rc1/4	Rc1/4	200
3/8 KSAME	34.5	21	100	Rc3/8	Rc3/8	350
1/2 KSAME	49	26	140	Rc1/2	Rc1/2	850
3/4 KSAME	49	32	150	Rc1/2	Rc1/2	1000

● Straight type



● Bending type

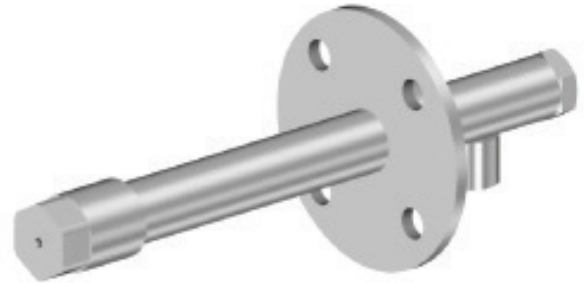
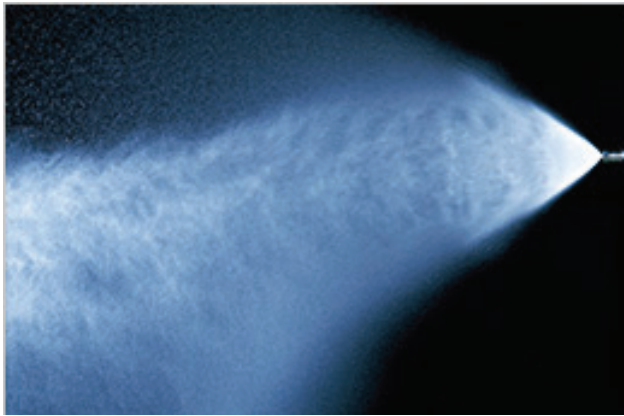


● Standard type model number list

Inlet Connection	Model number of nozzle tip	Model number of mixing body	Min. orifice diameter for liquid (mm)	Air pressure (MPa)	Water flow rate (L/min) and air flow rate [m³/h(nor)] at following water pressure [MPa]										Spray angle	
					0.1		0.2		0.3		0.5		0.7			
					Water	Air	Water	Air	Water	Air	Water	Air	Water	Air		
1/4	KSAME 18143	1/4 A40 1/4 W28	1.5	0.1	1.8	8.4	4.4	3.6	6.2	2.0	8.1	0.8	-	-	Approx. 130°	
				0.2	-	-	2.5	12.5	4.5	8.2	7.6	4.2	9.3	2.5		
				0.3	-	-	-	-	2.8	17.2	6.3	9.4	8.8	6.0		
				0.4	-	-	-	-	-	-	5.0	16.2	7.7	10.8		
3/8	KSAME 2258	3/8 A60 3/8 W33	2.9	0.1	1.7	11.7	6.3	3.5	9.2	1.4	-	-	-	-	Approx. 60°	
				0.2	-	-	2.2	19.0	6.4	9.0	11.0	3.9	13.9	1.6		
				0.3	-	-	-	-	2.7	24.0	9.0	10.0	12.8	5.6		
				0.4	-	-	-	-	-	-	6.8	18.6	11.2	11.0		
	KSAME 2690	3/8 A48 3/8 W38	2.3	2.3	0.1	3.3	11.8	8.5	4.0	11.5	1.5	-	-	-	-	Approx. 90°
					0.2	0.4	30.0	4.2	18.4	8.6	10.2	14.3	4.0	17.5	2.0	
					0.3	-	-	1.3	36.0	5.0	25.0	12.0	11.0	16.5	6.0	
					0.4	-	-	-	-	1.9	43.0	9.1	22.0	14.5	12.5	
KSAME 3375	3/8 A55 3/8 W43	3.0	3.0	0.1	4.0	13.5	11.0	4.2	15.2	1.8	-	-	-	-	Approx. 70°	
				0.2	-	-	5.5	21.0	11.6	10.2	18.6	4.0	23.5	1.2		
				0.3	-	-	1.4	46.0	6.3	28.5	15.4	12.5	21.4	6.3		
				0.4	-	-	-	-	2.4	54.0	11.7	26.5	18.9	14.0		
1/2	KSAME 59133	1/2 A73 1/2 W51	2.7	0.1	6	26	15	11	22	5	-	-	-	-	Approx. 120°	
				0.2	1	68	8	42	16	24	26	11	33	6		
				0.3	-	-	-	-	10	54	22	28	30	17		
				0.4	-	-	-	-	-	-	17	51	27	32		
	KSAME 8096	1/2 A120 1/2 W59	3.9	3.9	0.1	5	40	21	11	29	4	-	-	-	-	Approx. 90°
					0.2	-	-	7	63	21	27	35	12	45	5	
					0.3	-	-	-	-	8	85	29	31	42	16	
					0.4	-	-	-	-	-	-	22	62	36	35	
	KSAME 112144	1/2 A110 1/2 W73	3.6	3.6	0.1	10	47	30	13	42	5	-	-	-	-	Approx. 130°
					0.2	-	-	13	73	30	33	54	13	67	7	
					0.3	-	-	-	-	13	105	42	38	62	20	
					0.4	-	-	-	-	-	-	31	77	54	41	
3/4	KSAME 180145	1/2 A140 1/2 W96	5.0	0.1	16	85	59	22	76	9	-	-	-	-	Approx. 130°	
				0.2	-	-	-	-	55	45	93	22	119	10		
				0.3	-	-	-	-	-	-	78	59	108	33		
				0.4	-	-	-	-	-	-	57	133	95	70		

KSWC type

Nozzle for Spray Tower



Smaller droplets

Hollow Cone Pattern Nozzles

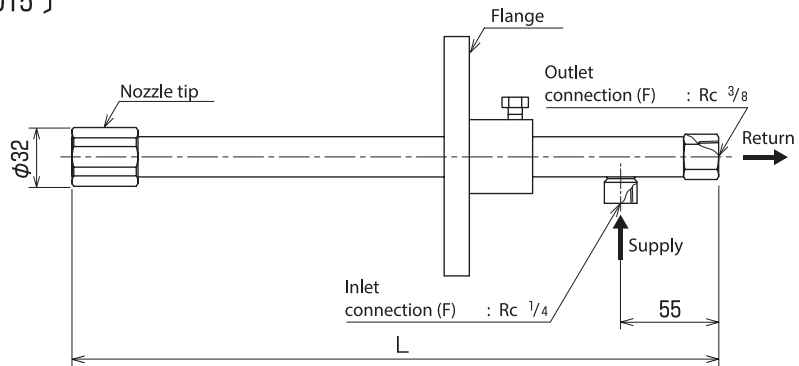
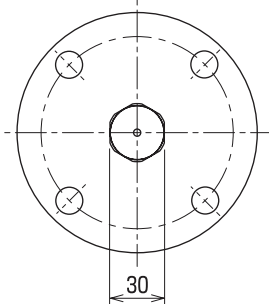
QC NOZZLE

Special : Available nozzles can spray high flow rate for huge cooling towers

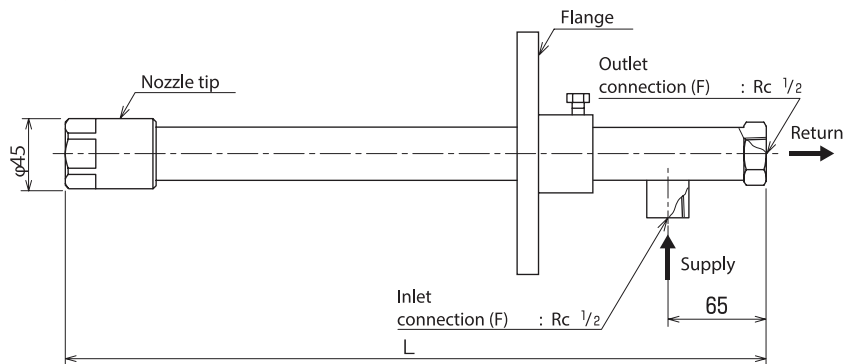
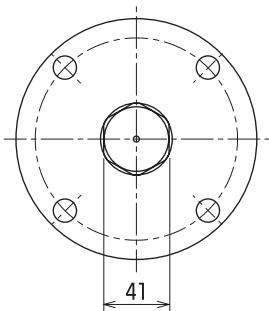
Application : Cooling of gases / Humidity control / Gas cooling tower

Shapes and dimensions

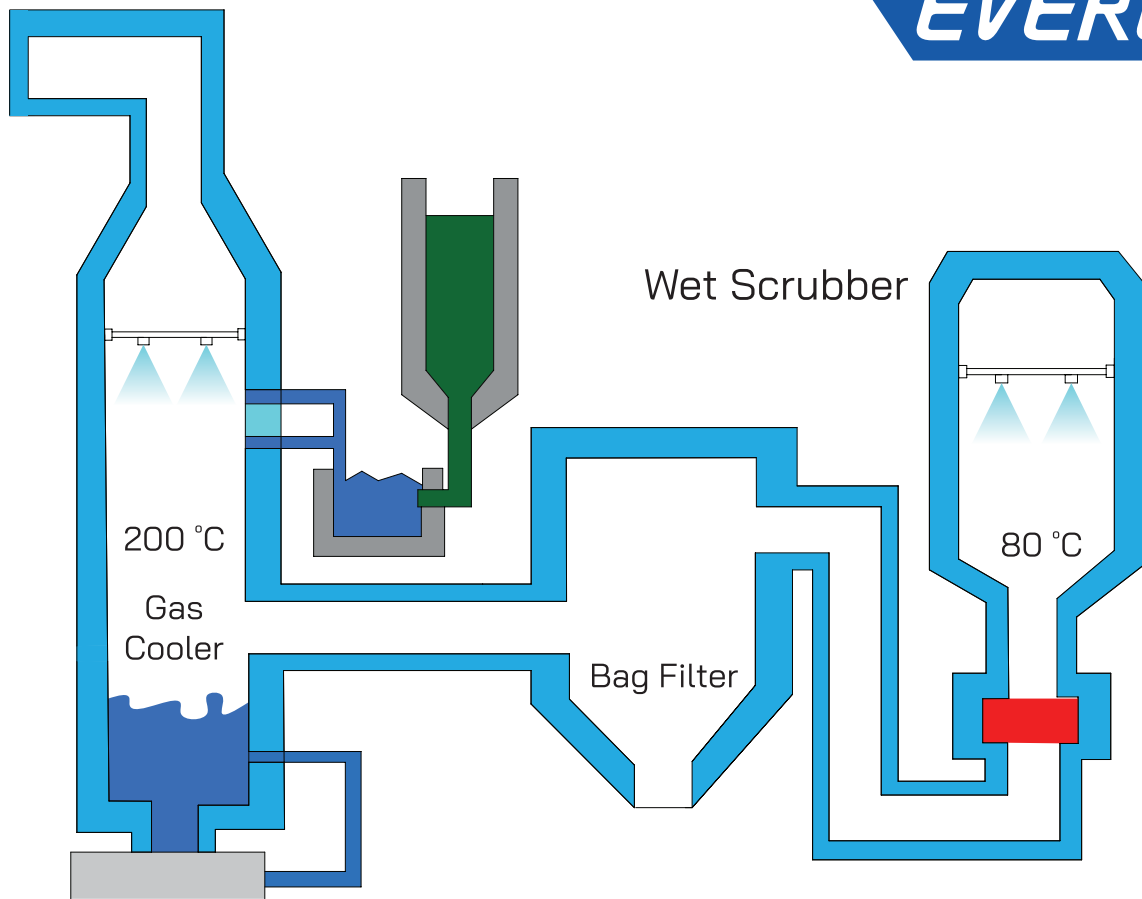
- KSWC... -QC -T type
(Model number : 01 to 015)



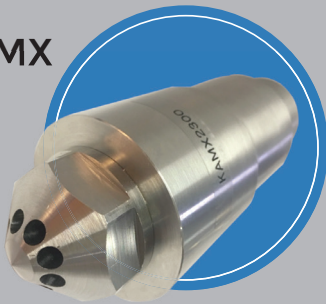
- (Model number : 02 to 094)



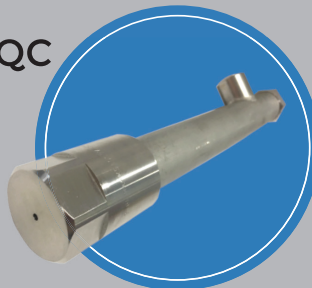
* Dimension L and flange size are to be specified by the customer.
NPT thread is also available.



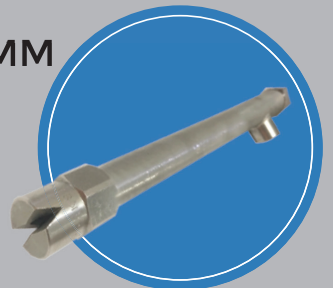
KAMX



QC



KSAMM



Special Material

- INCONEL
- HASTELLOY C22
- TITANIUM
- SUS329J4L

Special Application

- NOx Removal (SNCR)
- Gas Cooling Spray SOx Removal
- Wet Cleaning Spray

